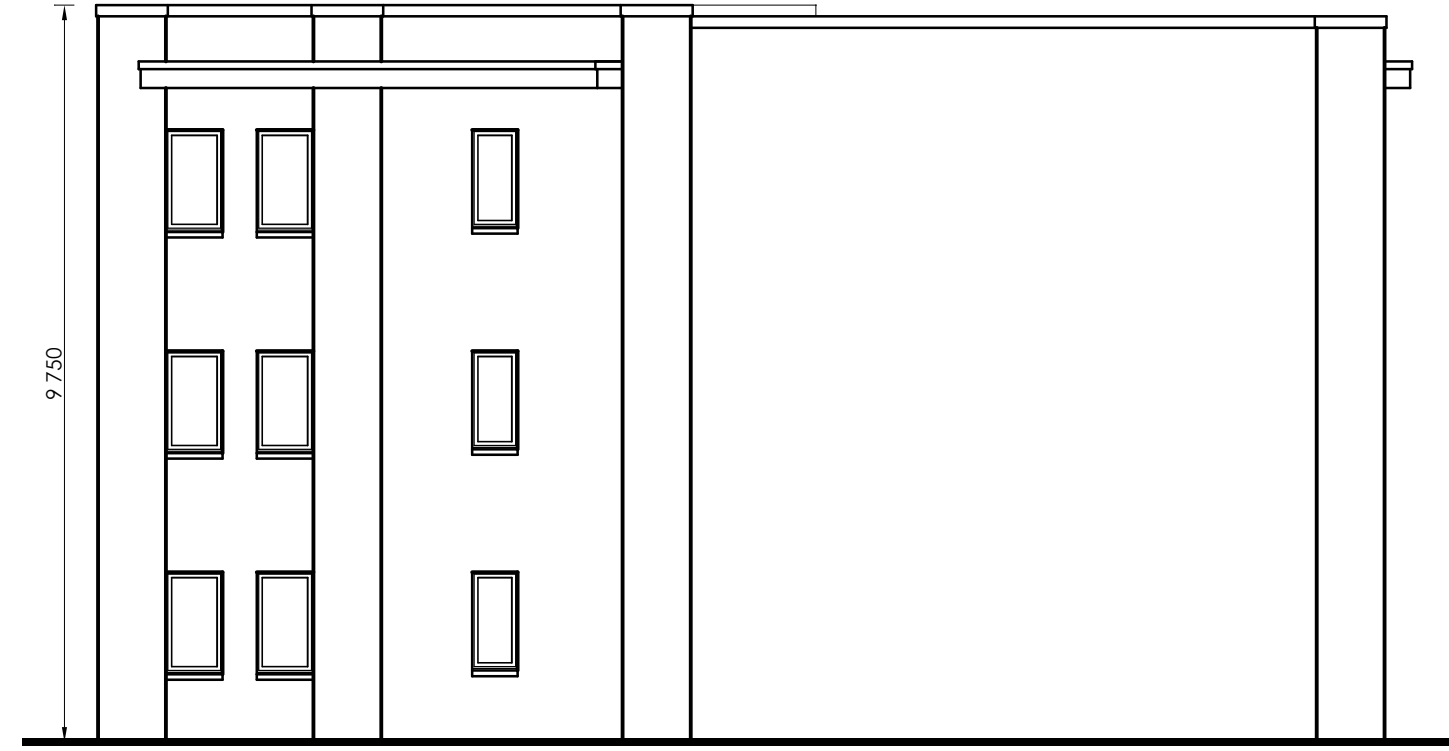


- Crystic fibreglass flat roof membrane to roof
- Selected plaster finish
- Selected brick where indicated
- Selected double/triple glazed windows & doors
- Smooth plaster plinth where indicated

Front Elevation

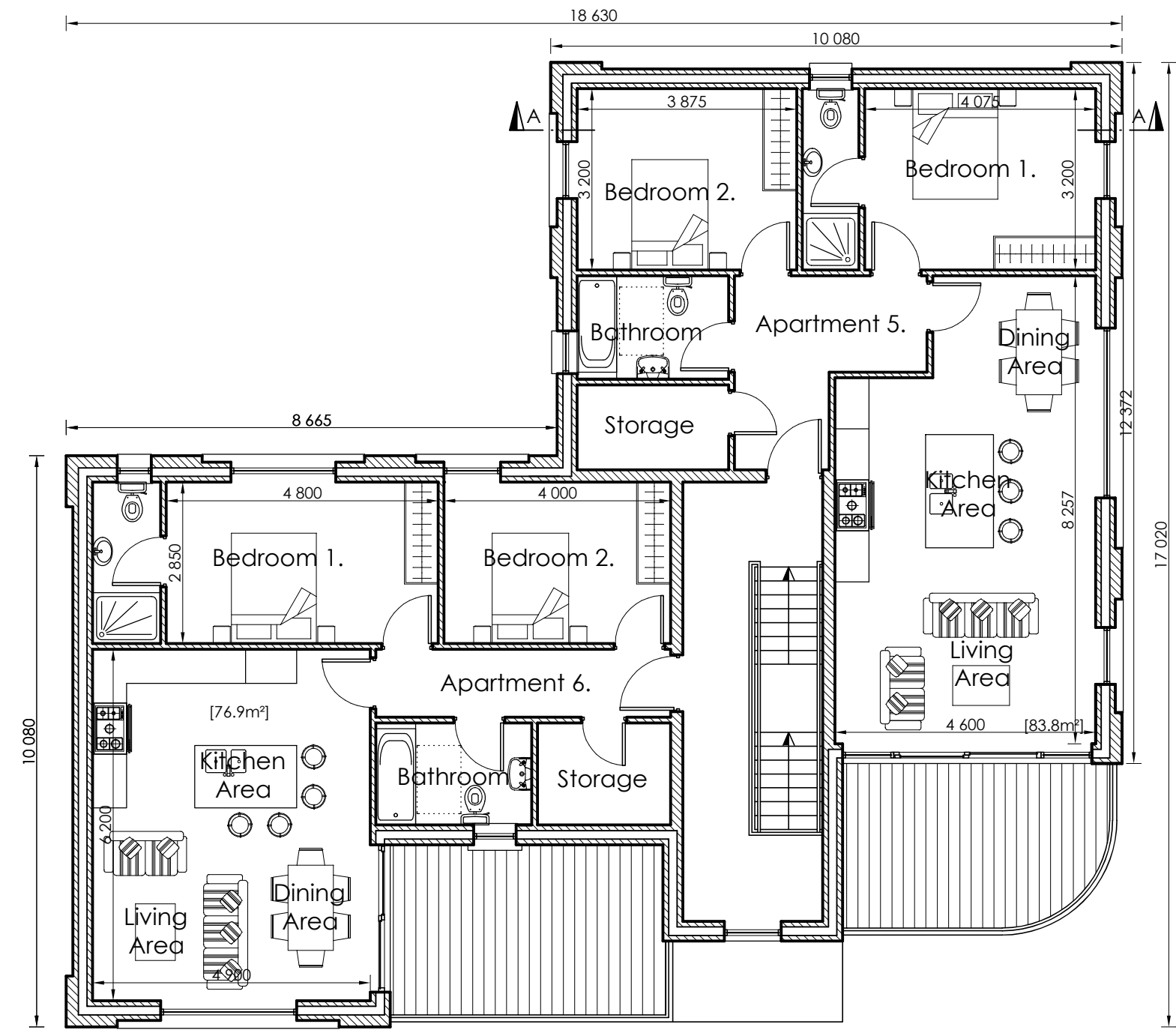
Scale 1:100



- Crystic fibreglass flat roof membrane to roof
- Selected plaster finish
- Selected double/triple glazed windows & doors
- Smooth plaster plinth where indicated

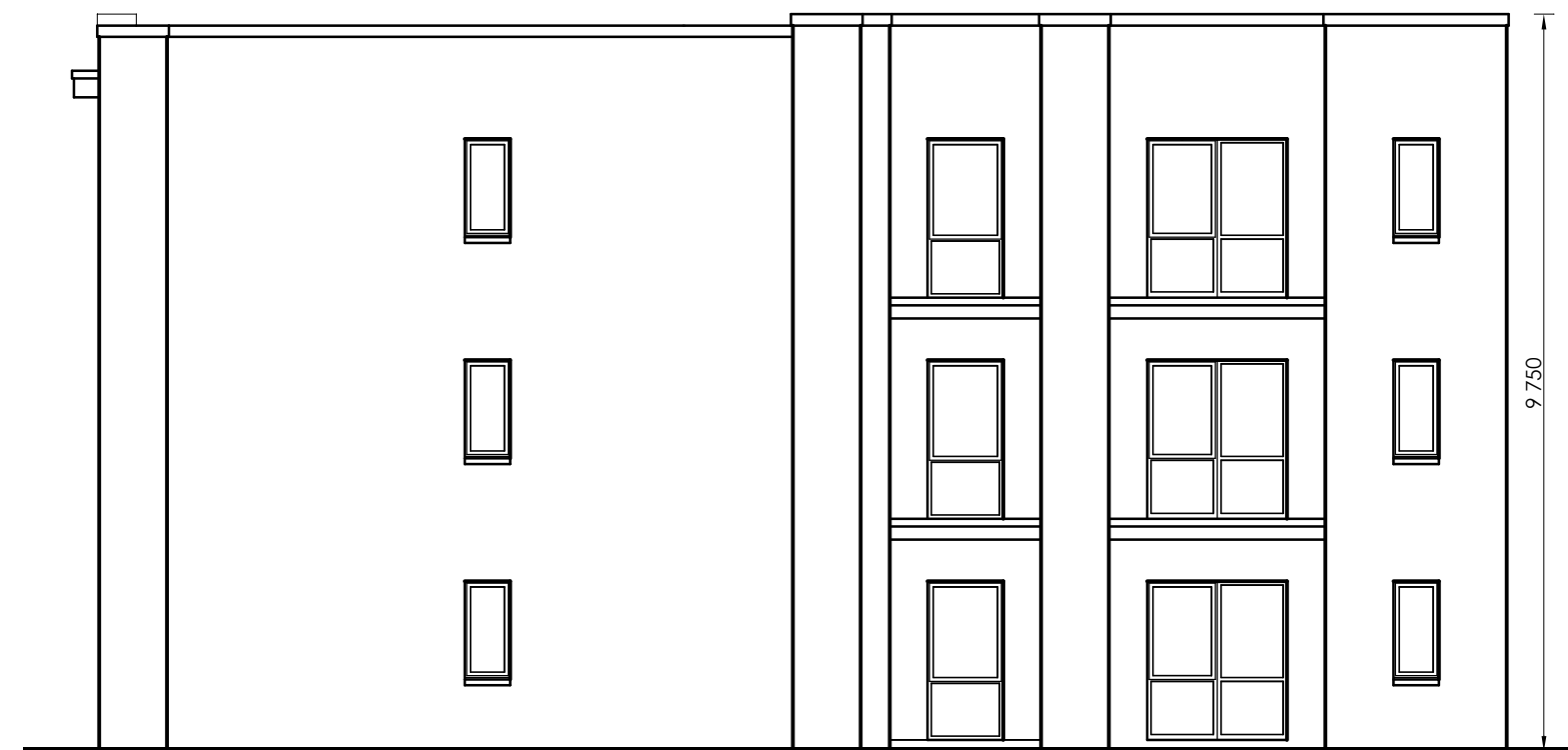
Side Elevation

Scale 1:100



Second Floor Plan

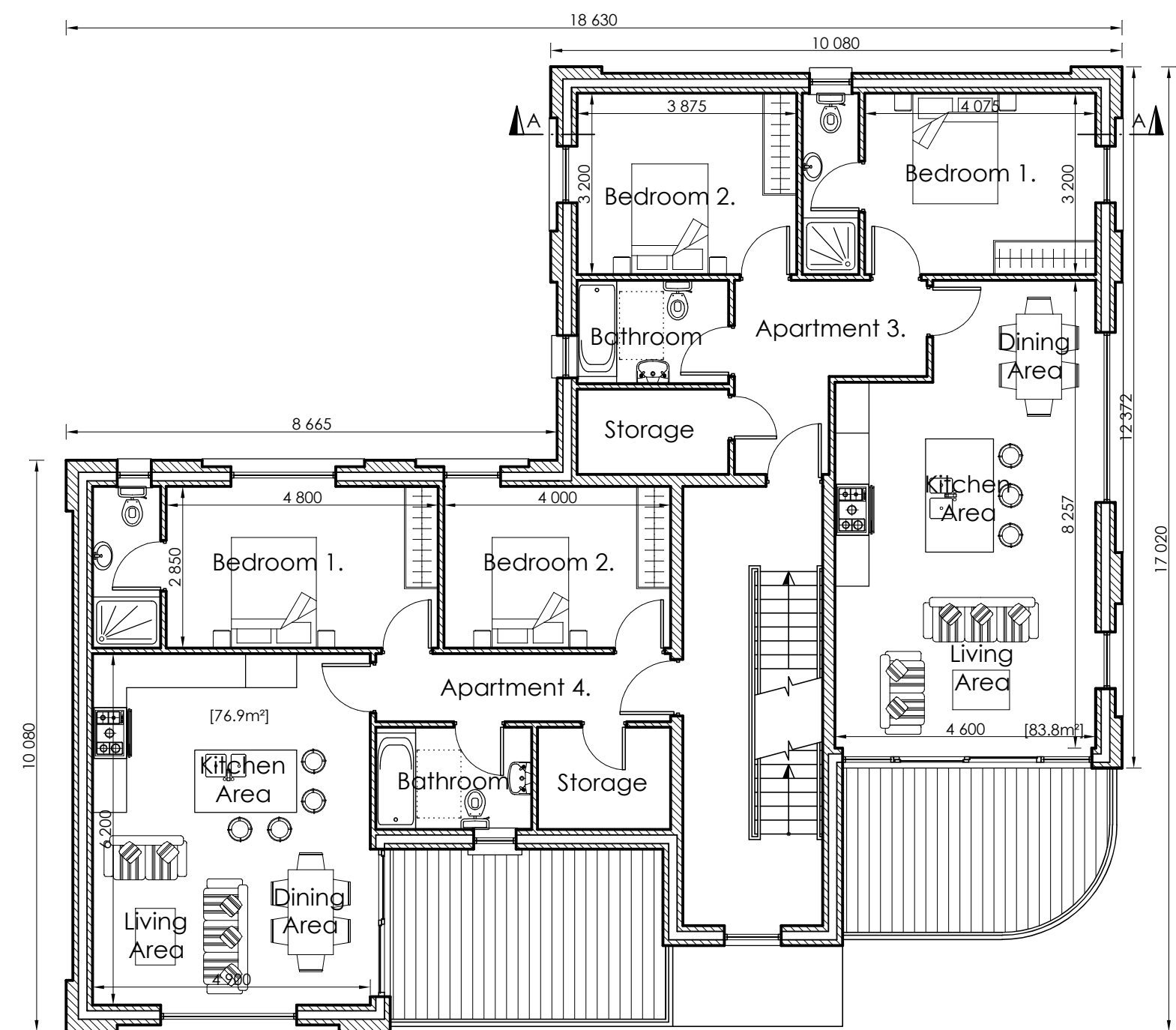
Scale 1:100



- Crystic fibreglass flat roof membrane to roof
- Selected plaster finish
- Selected double/triple glazed windows & doors
- Smooth plaster plinth where indicated

Rear Elevation

Scale 1:100



First Floor Plan

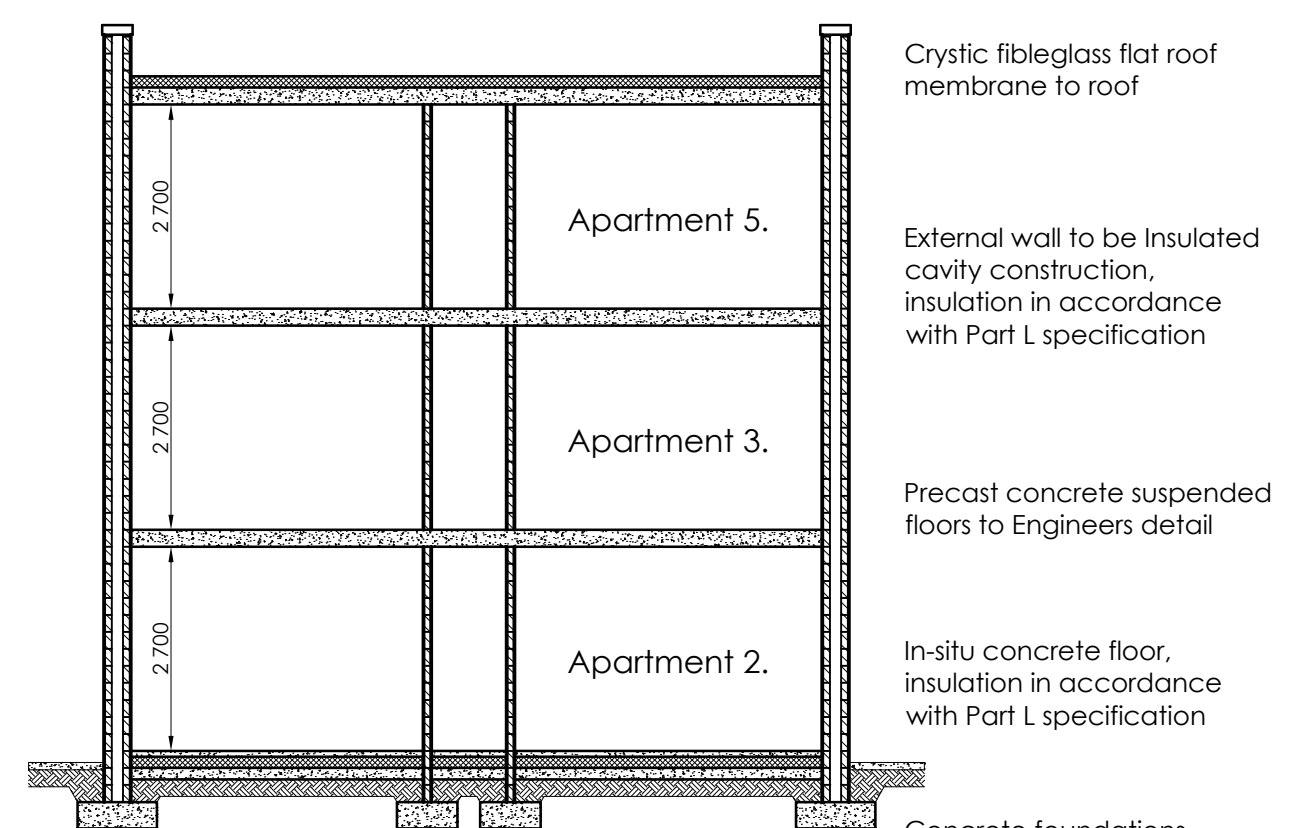
Scale 1:100



- Crystic fibreglass flat roof membrane to roof
- Selected plaster finish
- Selected brick where indicated
- Selected double/triple glazed windows & doors
- Smooth plaster plinth where indicated

Side Elevation

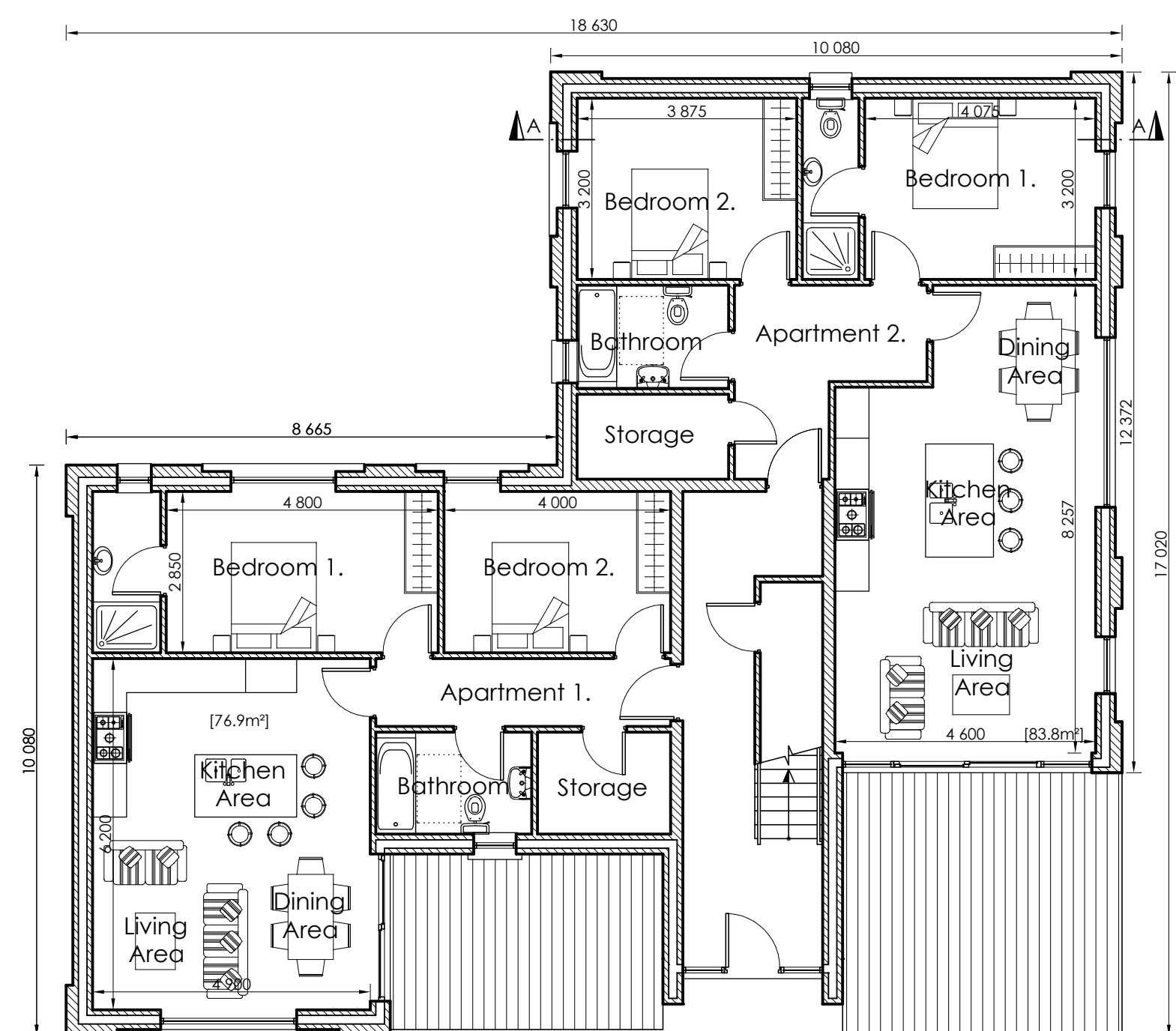
Scale 1:100



- Crystic fibreglass flat roof membrane to roof
- External wall to be insulated cavity construction, insulation in accordance with Part L specification
- Precast concrete suspended floors to Engineers detail
- In-situ concrete floor, insulation in accordance with Part L specification
- Concrete foundations in accordance with engineers specification

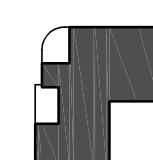
Section A-A

Scale 1:100



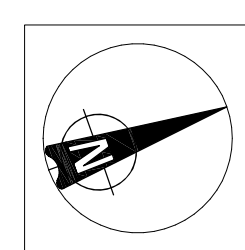
Ground Floor Plan

Scale 1:100

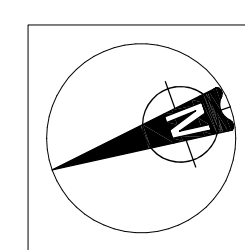


Type 'C' [Total Area = 3 x 550.5 m²]

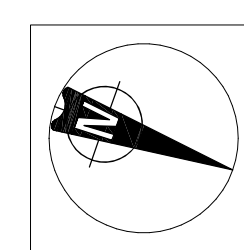
- 9. 2-bed [76.9 m²] Apartment nos. 36, 38, 40, 88, 90, 92, 363, 365 & 367
- 9. 2-bed [83.8 m²] Apartment nos. 37, 39, 41, 89, 91, 93, 364, 366 & 368



House No.: 36-41



House No.: 88-93



House No.: 363-368

Revision	Description	Date
GLEESON MCSWEENEY		
Project Proposed residential development at Ballykeeffe, Raheen, Limerick. For: DW Raheen Developments Ltd.		Stage Planning
Title Apartment Building Type C		
Scale 1:100 @ A1	Date December 2021	Drg No. 1704-10-125
Drawn M.M.	Rev	99 O'Connell St., Limerick T 061 412277 E info@gleesonmcsweeney.ie

ARCHITECTS